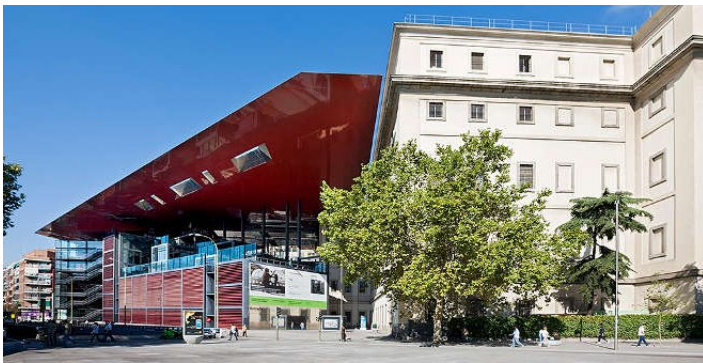


Welcome to Madrid

The Reina Sofía Museum presents an exhibition that seeks to delve into the artist's contribution to the birth of modern art from today's perspective. It runs from 14 November 2023 until 4 March 2024, marking the fiftieth anniversary of the death of Pablo Picasso.

The exhibition, curated by Eugenio Carmona, shows a Picasso full of optimism and eager to redefine the artistic experience. Committed to the process and in search of the primitive, his work focuses on two concerns: the body and interculturality.

Through drawings and sketchbooks, full synergy with primitive cultures and a search for the primitive can be observed. 1906 was a year of great transformation for Picasso.



Practical Information

When

From 14 November 2023 until 4 March 2024

Address

Calle
de Santa Isabel, 52
28012

Telephone

Email

Metro

Estación del Arte (L1)
Atocha (L1)
Lavapiés (L3)

Cercanías (local train)

Madrid-Atocha

Prices

Check official webpage

Type

Exhibitions
Drawing

Where

Reina Sofia Museum

Tourist area

Paseo del Arte

Fax

Website

<https://www.museoreinasofia.es/exposiciones>

Bus

001, 6, 10, 14, 19, 26, 27, 32, 34, 36, 37, 41,
45, 59, 85, 86, 102, 119, C1, C2, C03, E1,
N9, N10, N11, N12, N13, N14, N15, N17,
N25, N26

BiciMAD bike-share scheme

Consulta el mapa de estaciones .

Times

Check official webpage



Official Tourism Website