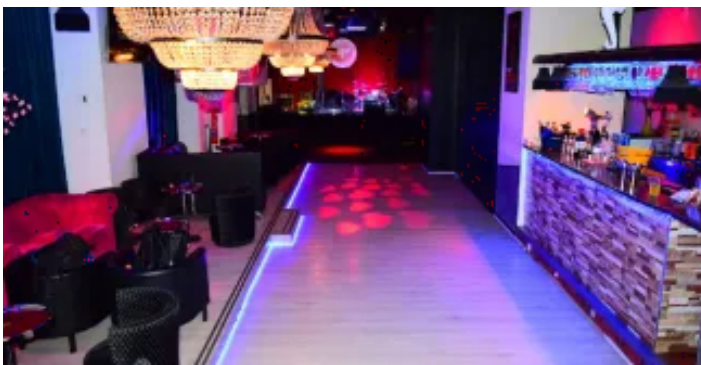


# Welcome to Madrid

**This spectacular concert hall is located in the heart of Chamartín, in the Prosperidad district, where the legendary “La Buena Dicha” used to be.**

Elefante Blanco stands out for its magnificent stage and its acoustics. Different genres of live music are programmed here, along with monologues, clubbing, etc.



## Complementary services

Image



Show

## Practical Information

### Address

Calle  
de Santa Hortensia, 14  
28002

### Telephone

(+34) 615 340 892

### Web

<https://www.elefanteblancomadrid.com/>

### Metro

Alfonso XIII (L4)  
Prosperidad (L4)

### Cercanías (local train)

### Times

Horarios

Thurs and Sun: 9pm - 3am

Fri– Sat: 7pm - 3am

### Tourist area

Otros

### Fax

### Email

[info@elefanteblancomadrid.com](mailto:info@elefanteblancomadrid.com)

### Bus

9, 43, 72, 73, N2

### BiciMAD bike-share scheme

Docking station: Corazón de María (calle  
Santa Hortensia, 31)

### Type

Live music



Official Tourism Website

 | MADRID